

Cassia Park

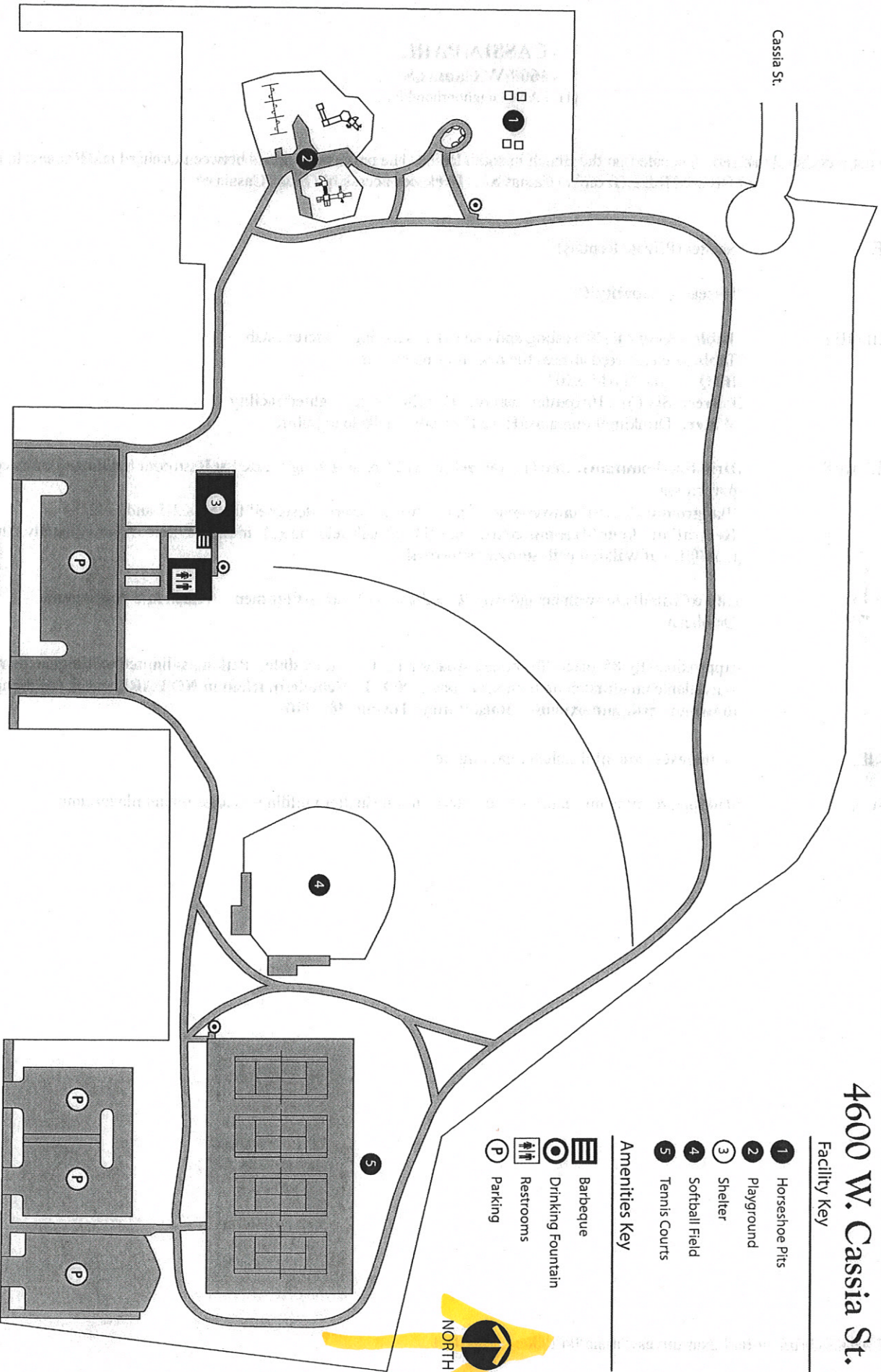
4600 W. Cassia St.

Facility Key

- 1 Horseshoe Pits
- 2 Playground
- 3 Shelter
- 4 Softball Field
- 5 Tennis Courts

Amenities Key

- Barbeque
- Drinking Fountain
- Restrooms
- Parking



CASSIA PARK
4600 W Camas St
(11.5 Acre Neighborhood Park)

Cassia Park is a neighborhood park and is located on the Bench in south Boise. The park is on Camas between Orchard and Roosevelt. (South on Orchard Rd. Left on W. Camas St.) **Park not accessible from Cassia St.**

RESERVABLE: Shelter (Private Rentals)

CAPACITY: 50/seating capacity 50

PICNIC FACILITIES: **Tables:** Four (4)-20' seating and one (1)-12' serving; concrete slab. Tables are scattered around the park for drop in use.
BBQ: One (1)-15"x20"
Power: Six (6)-110v outlets and one (1)-220v outlet; lighted facility
Water: Drinking Fountains; Hose Bibs not available to public.

OTHER FACILITIES/ **Drinking Fountains:** One (1) wall and two (2) free standing located at Restroom building; Tennis courts; playground

AMENITIES: **Playground:** located on west end of park; two structures designed for ages 2-5 and 5-12
Recreation: Four (4) tennis courts, one (1) softball field, one (1) multi-use field, Approximately 2 mile (2,480 ft.) of walking path surrounds the park.

RESTROOMS: Three (3) stalls for women and two (2) stalls/two (2) urinals for men. (Open mid April to mid October.)

PARKING: Approximately 85 spaces (3 of these spaces are ADA accessible). Parking is limited to designated areas and is available on a first come first serve basis. **NOTE: Vehicles parked in NO PARK areas will be towed at owners risk and expense. Boise Valley Towing 389-9707.**

PUBLIC PHONE: On the west side of the shelter parking lot.

***Accessible Areas:** Parking area at tennis courts - access to restroom/shelter building - access to/and playground.